

# SDSC VMWARE and CLOUD COMPUTE

## VMWARE

The SDSC IT Services team offers virtual machine (VM) services. By taking advantage of the professionally curated VMware environment, users avoid the hassle of acquiring and maintaining physical servers while enjoying all the benefits of owning them.

Other advantages include:

### RESILIENCY

Virtual servers are built to withstand normal backend hardware exhaustion by shifting resources on the fly.

### INCLUDED SYSTEM ADMINISTRATION

Acquiring a regular VM from SDSC effectively gives you both the server and the IT team that updates, troubleshoots, and protects it.

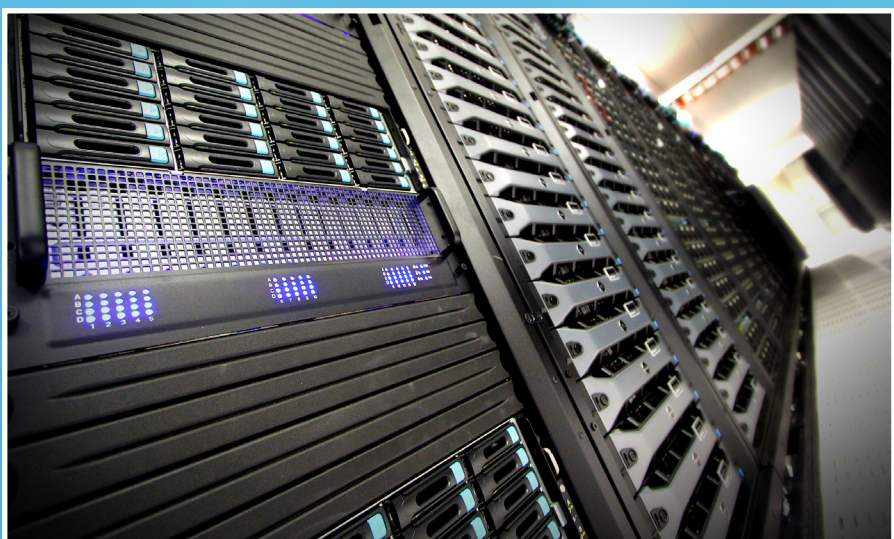
### HOSTNAMES

SDSC handles .ucsd.edu and .sdsc.edu hostname registrations at no extra cost.

Service Component	Recharge Rate
Base VM (1 vCPU/ 2 GB RAM/ 100 GB Storage)	\$69.75/Month
Additional 1 vCPU or 1 GB RAM	\$12.94/Unit/Month
Additional Storage	\$45.75/TB/Month
More frequent VM Snapshots (three times a week instead of once per month for disaster recovery purposes)	\$24/Month

## CLOUD COMPUTE

In addition to storage, SDSC Cloud now includes compute options. Users can spin up instances on demand.



Cloud compute is billed by hours of use of each instance. The base rate is \$0.08/SU, where an SU is the cost of running the most basic instance of one vCPU and 4 GB of memory at the rates of \$0.05/vCPU/hour and \$0.0075/GB of memory/hour. In addition, 20 GB of ephemeral disk storage is provided with each instance at no additional cost. More powerful instances or an increase in storage will cost more to run.

Instance Name	vCPU Count	Memory Count (GB)	System Disk (GB)	UC Recharge Rate (\$/hour)
m1.medium	1	4	20	\$0.08
m1.large	2	8	20	\$0.16
m1.xlarge	4	16	20	\$0.32
m1.2xlarge	8	32	20	\$0.64
c1.large	2	4	20	\$0.13
c1.large	4	8	20	\$0.26
r1.large	8	16	20	\$0.52
r1.large	2	16	20	\$0.22
r1.xlarge	4	32	20	\$0.44
r1.2xlarge	8	64	20	\$0.88

Type	UC Recharge Rate
Volume and Volume Snapshot	\$0.000063/GB/Hour
Image	\$0.000063/GB/Hour



## UC San Diego SDSC SAN DIEGO SUPERCOMPUTER CENTER

As an Organized Research Unit of UC San Diego, the San Diego Supercomputer Center (SDSC) is considered a leader in data-intensive computing and cyberinfrastructure, providing resources, services, and expertise to the national research community including industry and academia.

SDSC's 19,000-square foot climate-controlled and secure datacenter is fully equipped with 13 Megawatts of power, multi- 10-gigabit network connectivity, and a 24/7 operations staff.

### LEARN MORE | PARTICIPATE



Scan the QR code to visit [www.sdsc.edu/services](http://www.sdsc.edu/services)  
Or contact [services@sdsc.edu](mailto:services@sdsc.edu)